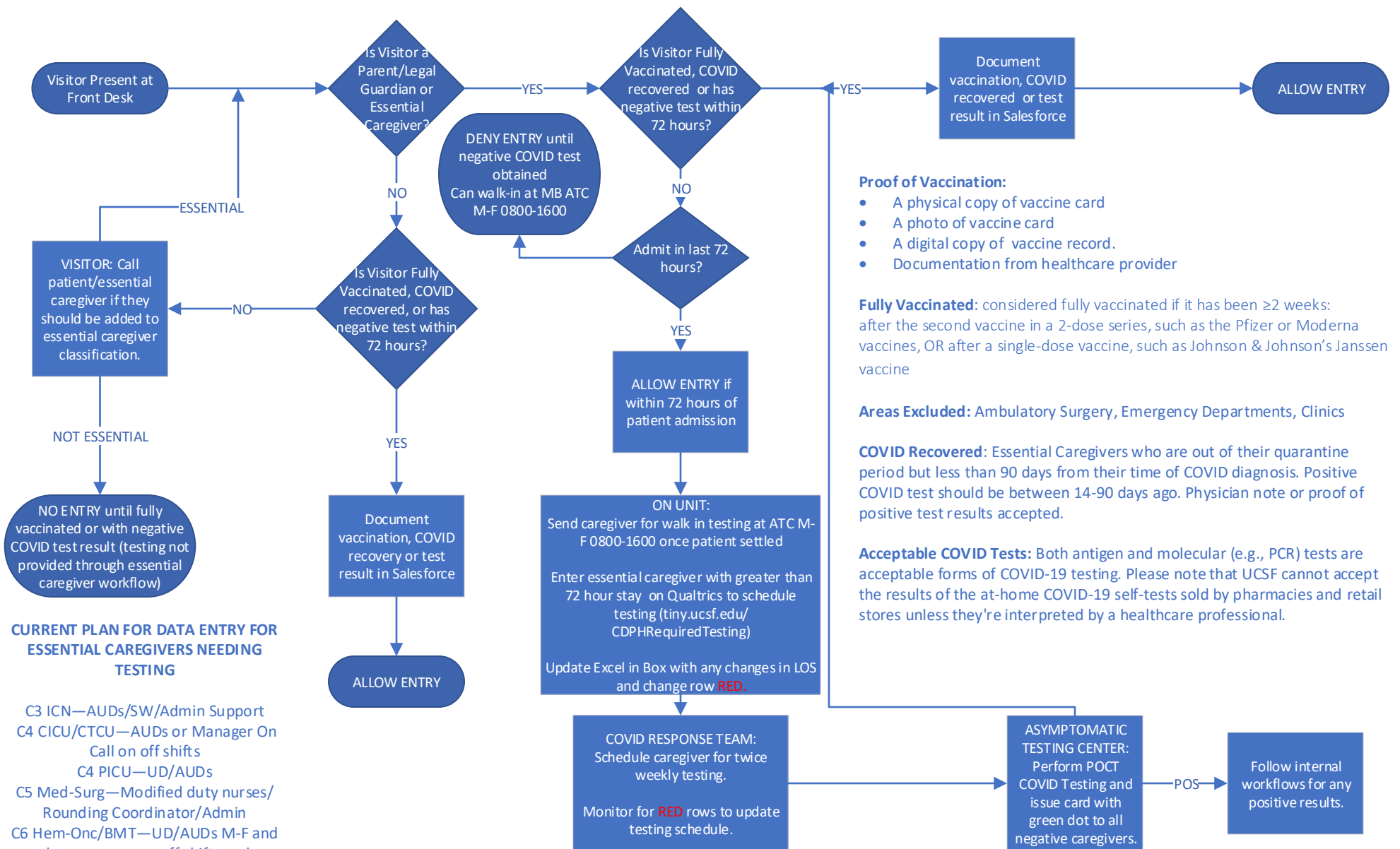




### UCSF CDPH Visitor Fully Vaccinated/Negative COVID Test Result Workflow



**Proof of Vaccination:**

- A physical copy of vaccine card
- A photo of vaccine card
- A digital copy of vaccine record.
- Documentation from healthcare provider

**Fully Vaccinated:** considered fully vaccinated if it has been  $\geq 2$  weeks: after the second vaccine in a 2-dose series, such as the Pfizer or Moderna vaccines, OR after a single-dose vaccine, such as Johnson & Johnson's Janssen vaccine

**Areas Excluded:** Ambulatory Surgery, Emergency Departments, Clinics

**COVID Recovered:** Essential Caregivers who are out of their quarantine period but less than 90 days from their time of COVID diagnosis. Positive COVID test should be between 14-90 days ago. Physician note or proof of positive test results accepted.

**Acceptable COVID Tests:** Both antigen and molecular (e.g., PCR) tests are acceptable forms of COVID-19 testing. Please note that UCSF cannot accept the results of the at-home COVID-19 self-tests sold by pharmacies and retail stores unless they're interpreted by a healthcare professional.

**CURRENT PLAN FOR DATA ENTRY FOR ESSENTIAL CAREGIVERS NEEDING TESTING**

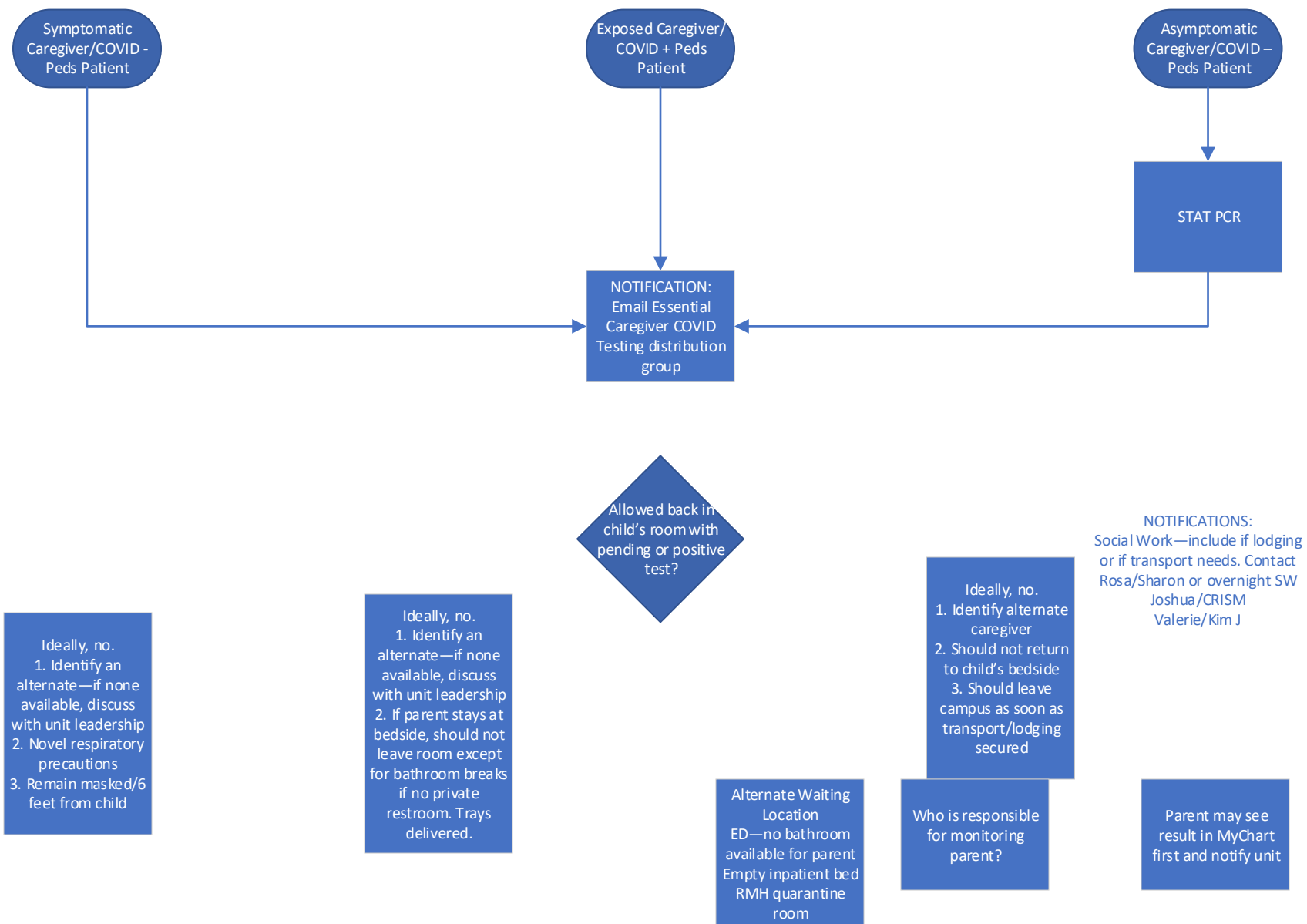
- C3 ICN—AUDs/SW/Admin Support
- C4 CICU/CTCU—AUDs or Manager On Call on off shifts
- C4 PICU—UD/AUDs
- C5 Med-Surg—Modified duty nurses/Rounding Coordinator/Admin
- C6 Hem-Onc/BMT—UD/AUDs M-F and charge nurses on off shifts and weekends
- Adult Units—Regular Business Hours
- M-F Unit Leaders/CM, After Hours and Weekends Campus Based Hospital Supervisors

Questions? Contact Valerie Bednar, Kim Johnston, or Tristin Penland

**Essential Caregivers**

- Parents or legal guardians for pediatric patients
- Support persons for patients during labor and postpartum
- Legal decision makers for conserved patients
- Caregivers for patients who meet the definition for having a necessary visitor (delirium, neurological condition, visually/hearing impaired, fetal demise, & developmental disabilities)
- End of Life visitors
- Support persons for a visitor with a disability

COVID Positive Caregiver Workflows 9\_9\_21



Ideally, no.  
 1. Identify an alternate—if none available, discuss with unit leadership  
 2. Novel respiratory precautions  
 3. Remain masked/6 feet from child

Ideally, no.  
 1. Identify an alternate—if none available, discuss with unit leadership  
 2. If parent stays at bedside, should not leave room except for bathroom breaks if no private restroom. Trays delivered.

Alternate Waiting Location  
 ED—no bathroom available for parent  
 Empty inpatient bed  
 RMH quarantine room

Who is responsible for monitoring parent?

Parent may see result in MyChart first and notify unit

NOTIFICATIONS:  
 Social Work—include if lodging or if transport needs. Contact Rosa/Sharon or overnight SW Joshua/CRISM Valerie/Kim J