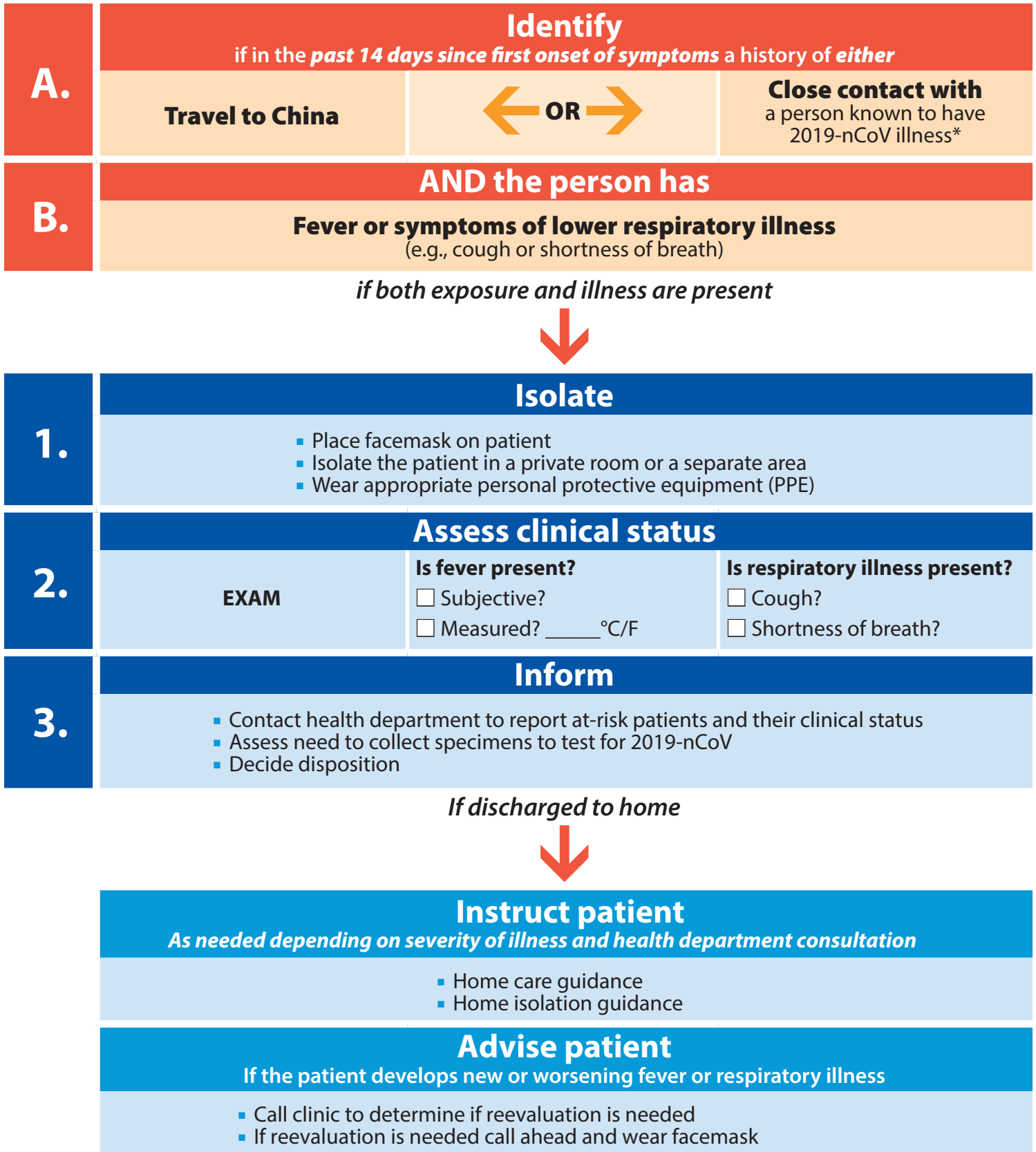


# Flowchart to Identify and Assess 2019 Novel Coronavirus

For the evaluation of patients who may be ill with or who may have been exposed to 2019 Novel Coronavirus (2019-nCoV)



\* Documentation of laboratory-confirmation of 2019-nCoV may not be possible for travelers or persons caring for patients in other countries. For more clarification on the definition for close contact see CDC's Interim Guidance for Healthcare Professionals: [www.cdc.gov/coronavirus/2019-nCoV/hcp/clinical-criteria.html](http://www.cdc.gov/coronavirus/2019-nCoV/hcp/clinical-criteria.html)

# Tip Sheet UCSF Emergency Department Parnassus/Mission Bay

- 1) Ask the patient to put on a **surgical** mask and place the patient as quickly as possible into an Airborne Infection Isolation (negative pressure) room in the ED or at least a private exam room.
- 2) Institute Airborne and Contact isolation plus eye protection—all healthcare personnel entering the patient’s room should be wearing either an N95 respirator with eye protection (goggles or a face shield) or PAPR, a gown, and gloves.
- 3) Consider sending a nasopharyngeal swab for routine respiratory viral panel testing to evaluate for community respiratory viral infections (e.g., influenza).
- 4) Immediately contact Hospital Epidemiology and Infection Prevention (HEIP):
  - a. Moffitt-Long or Mt. Zion: During business hours: 415-353-4343 (main office) or 415-806-0269 (on-call cell); During non-business hours: ML Hospital Supervisor Spectralink 415-353-8036 or 415-353-1964;
  - b. Mission Bay: During business hours: 415-353-4343 (main office) or 415-806-0269 (on-call cell); During non-business hours: Benioff Children’s Hospital-SF Hospital Supervisor 415-502-0728; MB Adult Hospital Clinical Resource Nurse 415-502-0562;
  - c. Benioff Children’s Hospital Oakland: (during business hours) 510-428-3733; (during non-business hours) cellphone 510-459-3702, pager 510-718-1466, or BCHO Nursing supervisor 510-428-3885 ext 6997
- 5) In coordination with HEIP, and after patient evaluation, contact San Francisco Department of Public Health Communicable Disease Control at (415) 554-2830; if calling after hours, (415) 554-3613 to reach the SFDPH on-call physician.

