

Security Workflow Parnassus for Suspect Ebola Patients

Communicate with supervisor that additional staff members are needed to: 1. cover your post 2. help secure path of travel from all other persons not involved with the care of the patient including both staff/visitors
Have at least one additional security person stationed at step three when moving patient to ED room 11
Maintain a distance of greater than 6 feet from the patient at all times
Retrieve doorstop from Triage binder for use in step 4

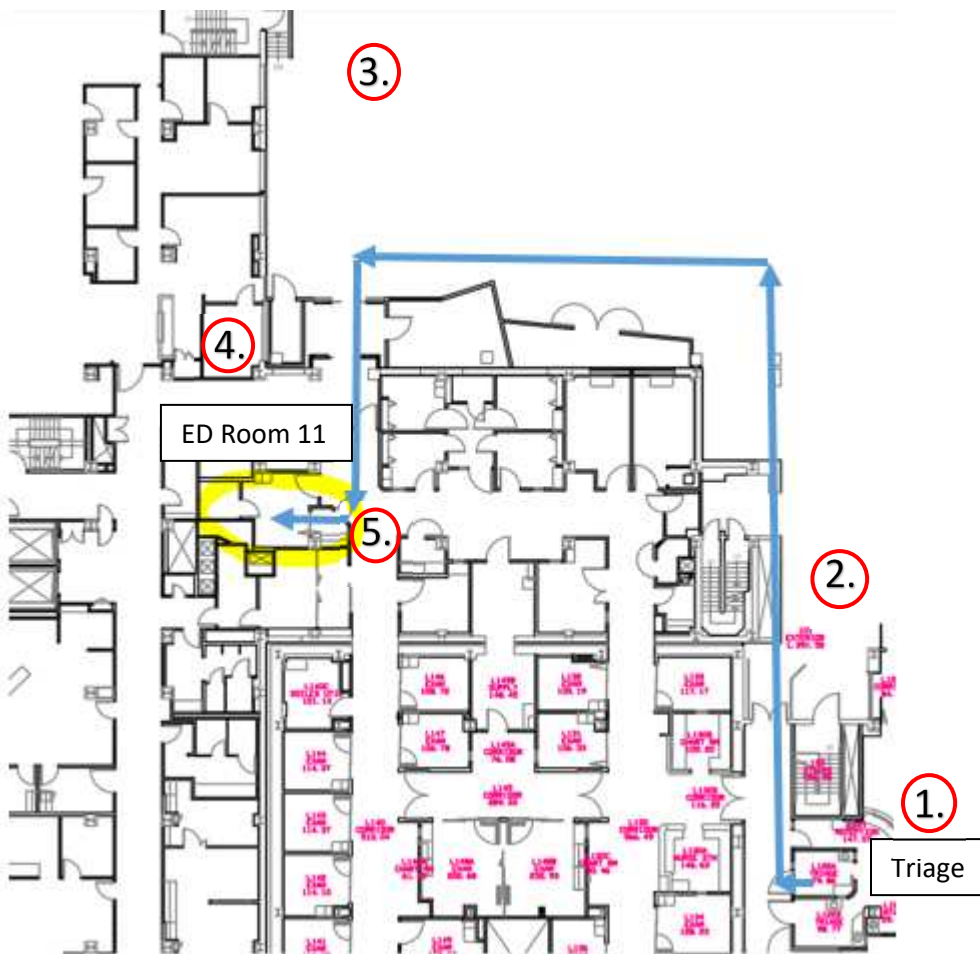
When patient is ready to move from one area to another:

No additional PPE is required; wear the universal mask that is required while in healthcare settings. Ensure you do not touch the patient and that the patient does not touch any surfaces

Walk ahead of the patient and accompanying staff (group), open all doors using doorstop if needed to maintain a distance of greater than 6 feet

After everyone is through the door retrieve doorstop; have the group wait and resume your position in front

See map and details below:



1. Exit triage into ambulance bay, assess hallway rerouting people as needed
2. Exit building and walk along sidewalks ahead of group
3. Station security person at this point redirecting foot traffic to main entrance (may need additional staff)
4. Open back door to ED with badge; use door stop to prop door then step back to a distance greater than 6 feet
5. Patient enters room 11 through hallway door; close door behind patient