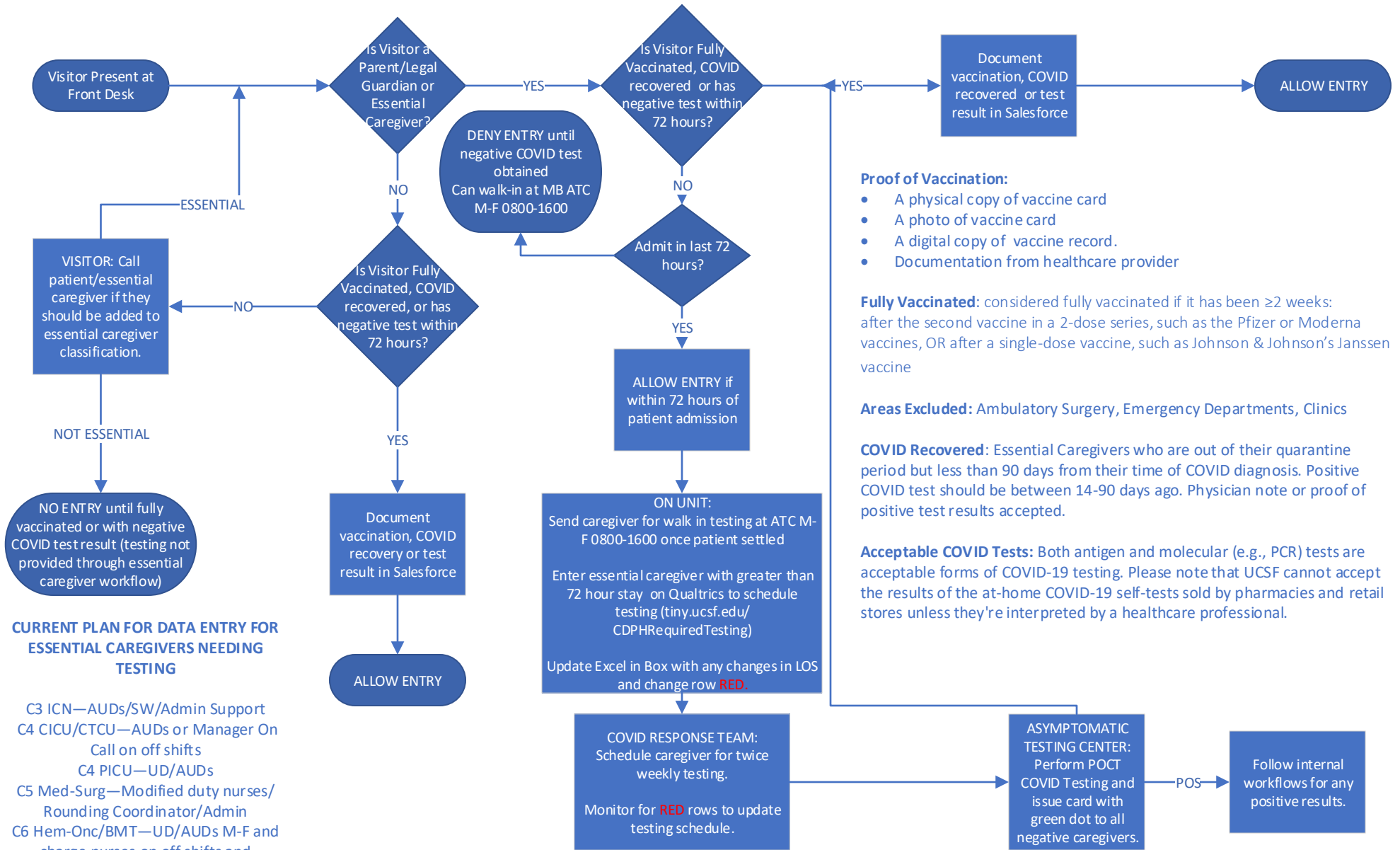


UCSF CDPH Visitor COVID Requirement Workflow



Proof of Vaccination:

- A physical copy of vaccine card
- A photo of vaccine card
- A digital copy of vaccine record.
- Documentation from healthcare provider

Fully Vaccinated: considered fully vaccinated if it has been ≥ 2 weeks: after the second vaccine in a 2-dose series, such as the Pfizer or Moderna vaccines, OR after a single-dose vaccine, such as Johnson & Johnson's Janssen vaccine

Areas Excluded: Ambulatory Surgery, Emergency Departments, Clinics

COVID Recovered: Essential Caregivers who are out of their quarantine period but less than 90 days from their time of COVID diagnosis. Positive COVID test should be between 14-90 days ago. Physician note or proof of positive test results accepted.

Acceptable COVID Tests: Both antigen and molecular (e.g., PCR) tests are acceptable forms of COVID-19 testing. Please note that UCSF cannot accept the results of the at-home COVID-19 self-tests sold by pharmacies and retail stores unless they're interpreted by a healthcare professional.

CURRENT PLAN FOR DATA ENTRY FOR ESSENTIAL CAREGIVERS NEEDING TESTING

- C3 ICN—AUDs/SW/Admin Support
- C4 CICU/CTCU—AUDs or Manager On Call on off shifts
- C4 PICU—UD/AUDs
- C5 Med-Surg—Modified duty nurses/Rounding Coordinator/Admin
- C6 Hem-Onc/BMT—UD/AUDs M-F and charge nurses on off shifts and weekends
- Adult Units—Regular Business Hours M-F Unit Leaders/CM, After Hours and Weekends Campus Based Hospital Supervisors

Questions? Contact Valerie Bednar, Kim Johnston, or Tristin Penland

Essential Caregivers

- Parents or legal guardians for pediatric patients
- Support persons for patients during labor and postpartum
- Legal decision makers for conserved patients
- Caregivers for patients who meet the definition for having a necessary visitor (delirium, neurological condition, visually/hearing impaired, fetal demise, & developmental disabilities)
- End of Life visitors
- Support persons for a visitor with a disability

COVID Positive Caregiver Workflows 9_9_21

