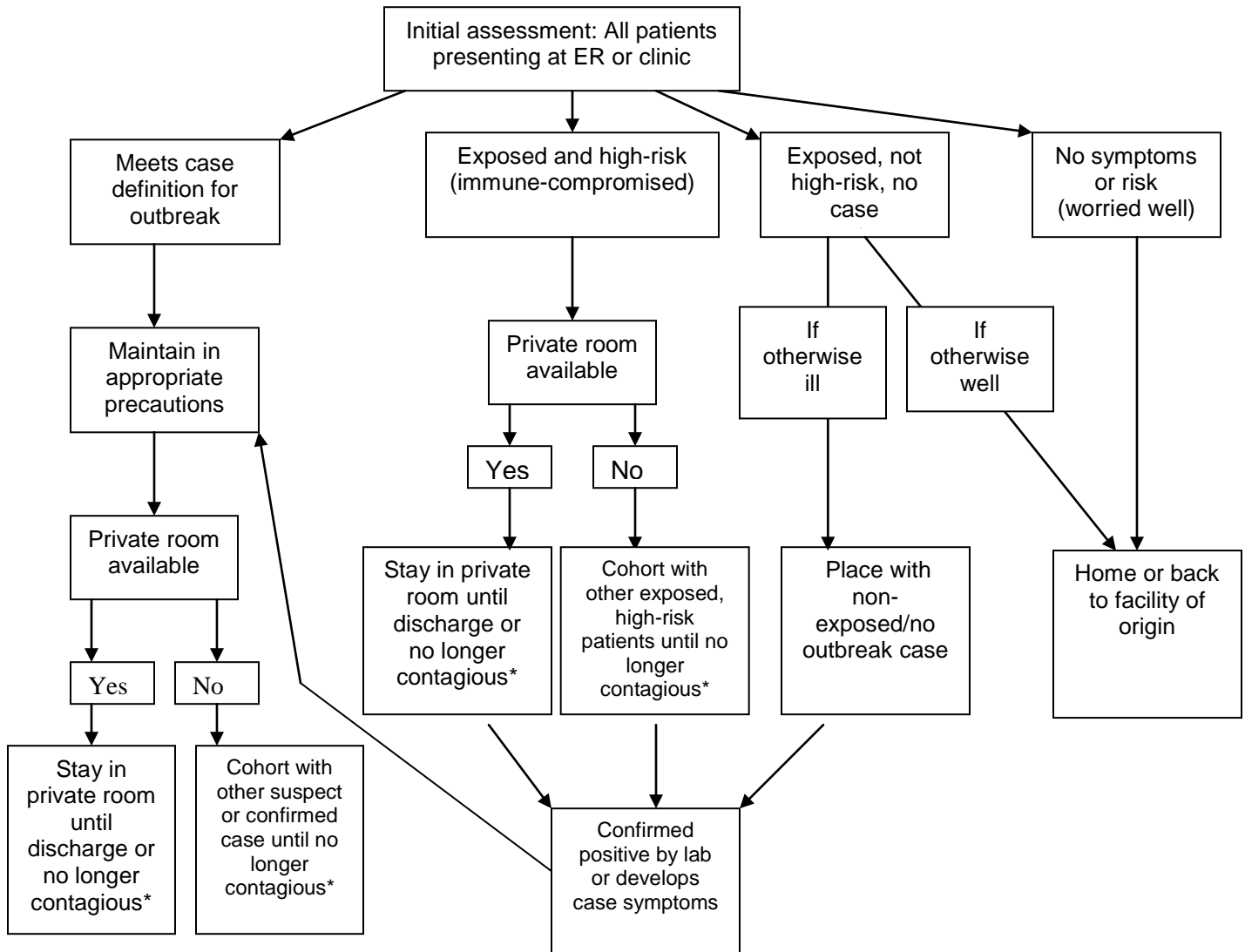


Appendix X

Patient Placement Triage Outflow



- Contagion may last for weeks after the illness, depending upon the infective agent. Refer to the Infection Control Manual, section 1.1, [Standard and Transmission-Based Precautions 1.1](#), and [Infection Control Website, Diseases and Conditions Table](#)

* Determination of patient contagion status by Infectious Disease consultation service