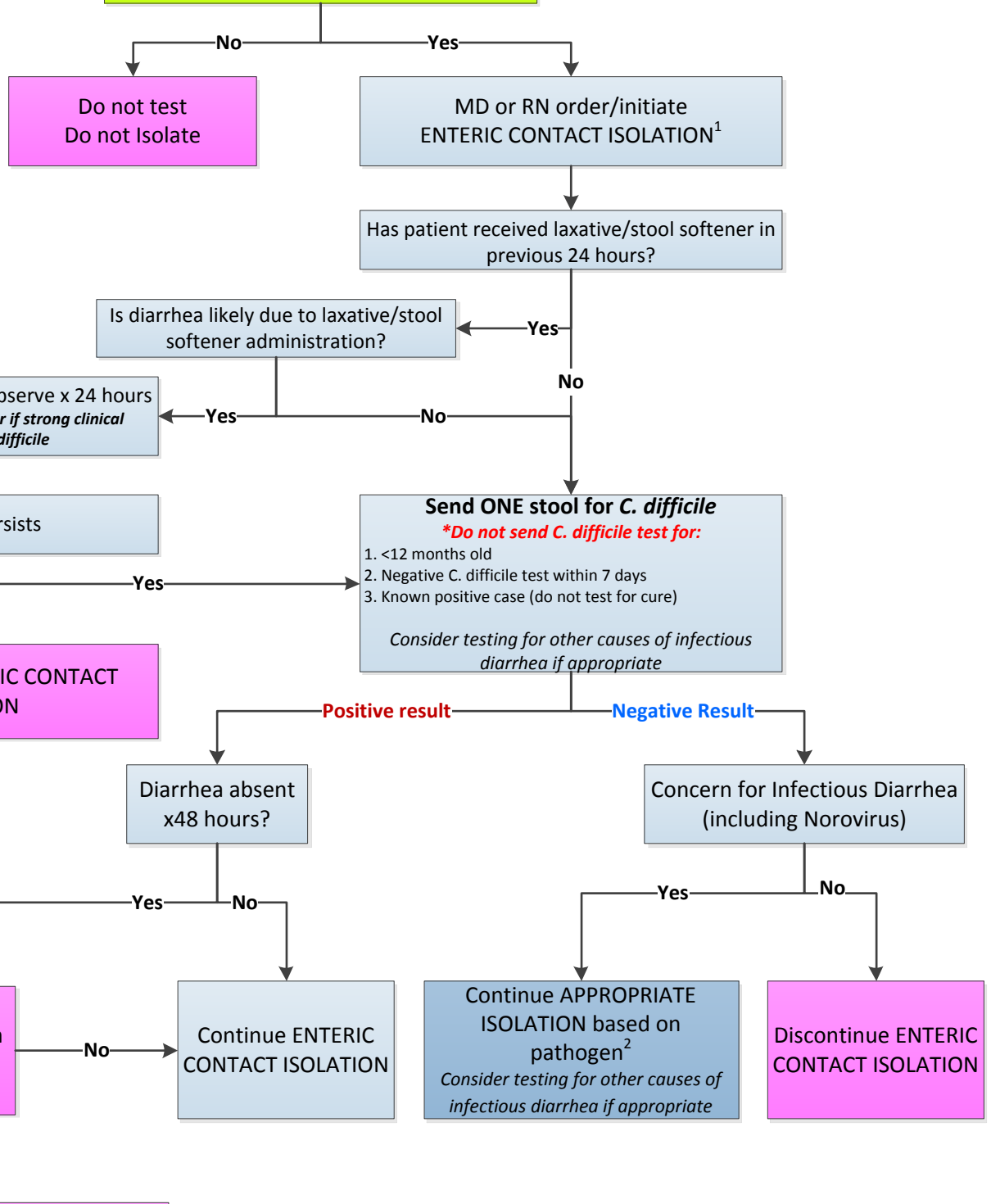


**DIARRHEA = ≥ 3 loose stools in ≤ 24 hours  
and concern for infectious diarrhea**

# Diarrhea Decision Tree

*The Diarrhea Decision Tree does not substitute for clinical assessment and judgment*



1. Enteric Contact Isolation: pt room and designated public areas on that unit are cleaned twice per day.  
2. Refer to Isolation Table on HEIC website: <http://infectioncontrol.ucsfmedicalcenter.org/>

\* If testing is required in these categories, contact:

- To obtain **APPROVAL FOR TESTING PT <12 MONTHS OF AGE**:  
→ Pediatric ID Pager: 415-443-2384
- To obtain **APPROVAL FOR TESTING** if performed <7 days from prior test:  
→ Microbiology: 415-353-1268
- For **CLINICAL, DIAGNOSTIC, AND TREATMENT RECOMMENDATIONS** for *C. difficile* and other pathogens: Infectious Diseases at:  
→ Adult ID Pager: General: 415-443-8628 and Transplant: 415-443-2552  
→ Pediatric ID Pager: 415-443-2384
- For **TRANSMISSION-BASED PRECAUTIONS** questions:  
→ Infection Control: 415-353-4343

*The Diarrhea Decision Tree does not substitute for clinical assessment and judgment*