

Preventing *Clostridium difficile* at UCSF

Click on the links below for resources to help reduce the risk of *Clostridium difficile* infection (CDI) at UCSF

Hand Hygiene Videos: **NEW!**

[Hand Hygiene using Soap and Water](#)

[Hand Hygiene using Alcohol Based Hand Rub \(ABHR\)](#)



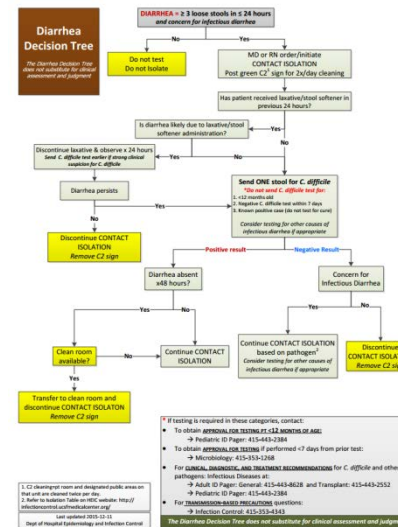
Contact Precautions Videos: **NEW!**

[Putting on personal protective equipment for Contact Precautions](#)

[Removing personal protective equipment for Contact Precautions](#)



[Diarrhea Decision Tree \(DDT\)](#)



[Bristol Stool Chart](#)

Bristol Stool Chart

Type 1		Separate hard lumps, like nuts (hard to pass)
Type 2		Sausage-shaped but lumpy
Type 3		Like a sausage but with cracks on the surface
Type 4		Like a sausage or snake smooth and soft
Type 5		Soft blobs with clear-cut edges
Type 6		Fluffy pieces with ragged edges, a mushy stool
Type 7		Watery, no solid pieces, Entirely Liquid

Type 6 & 7 are considered "loose" and/or "watery" and are suitable C. difficile specimens.

[Contact Precautions Sign:](#)

Place in clear pocket, front of isolation caddy

[Wash Hands with Water and Soap on Exit:](#)

Place on alcohol foam dispenser inside patient room to obstruct usage